



MONTHLY MEMBERSHIP PROGRESS REPORT

District 27 E1

Results as of: 05/31/2019

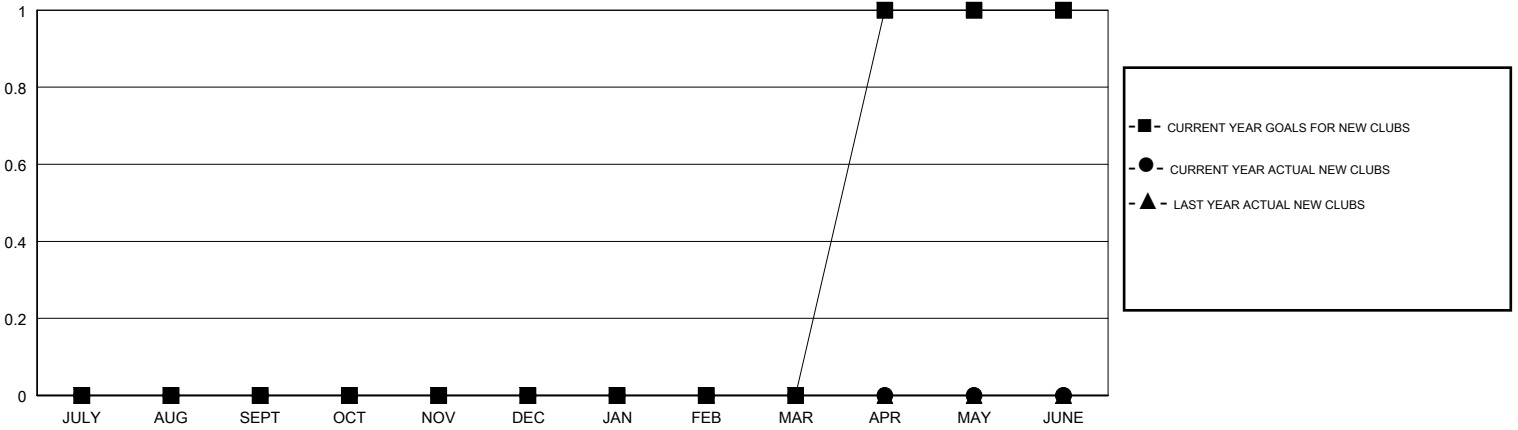
GMT: OPEN

LOCATION WISCONSIN

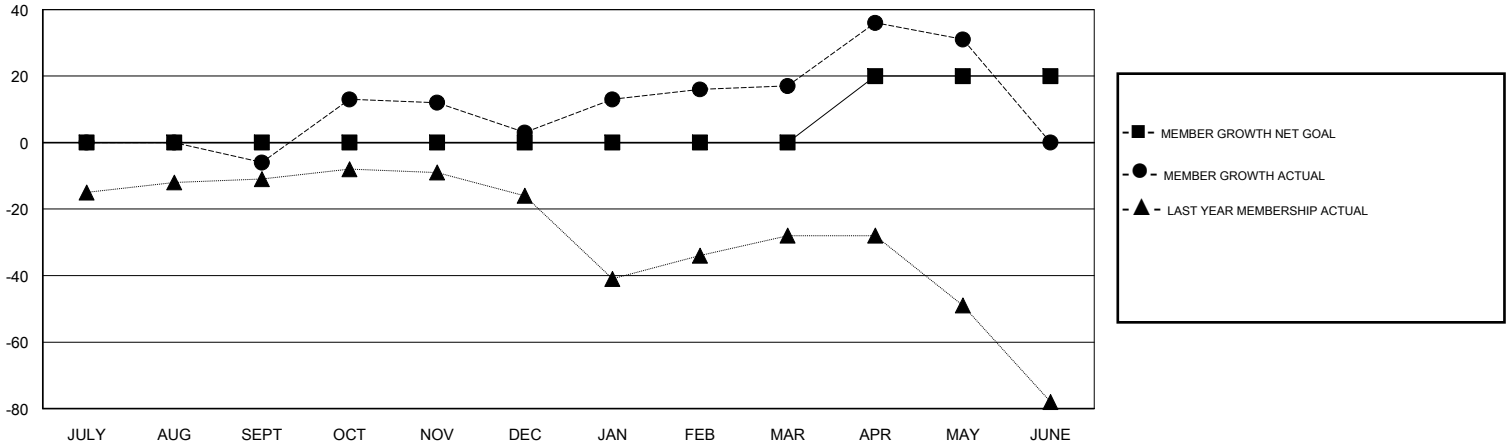
GMT CA

Clubs				Members			
RESULTS FOR 2018-2019				RESULTS FOR 2018-2019			
QUARTER	NEW CLUB GOAL	NEW CLUBS	DROPPED CLUBS	QUARTER	MEMBER GROWTH NET GOAL	MEMBER GROWTH ACTUAL	DROPPED MEMBERS ACTUAL (including transfers)
JULY/AUG/SEPT	0	0	0	JULY/AUG/SEPT	0	22	22
OCT/NOV/DEC	0	0	0	OCT/NOV/DEC	0	46	36
JAN/FEB/MAR	0	0	0	JAN/FEB/MAR	0	31	17
APR/MAY/JUNE	1	0	0	APR/MAY/JUNE	20	35	18

GOALS AND ACTUAL NEW CLUBS CUMULATIVE



GOALS AND ACTUAL MEMBERS CUMULATIVE



DROPPED CLUBS: 0	32 CLUBS OF 45 ADDED 1 OR MORE NEW MEMBERS	<u>GENDER DISTRIBUTION</u> MALE 1,140 (68.35%) FEMALE 528 (31.65%) Women Percentage Fiscal Year Goal: 33%
<u>DROPPED MEMBERS</u> DECEASED 10 CLUB CANCELLED 0 OTHER 82 TOTAL 92	CLICK HERE FOR CUMULATIVE MEMBERSHIP DATA	TOTAL FAMILY UNIT MEMBERS 482 FAMILY MEMBERS PAYING HALF DUES 244